

Installation manual FleetGO Easy Connect FGT400

Start

This is the manual for installing the FleetGO Easy Connect.
Before you start, you'll need the following:

- Login to your FleetGO account (you have received them by email)
- FleetGO Easy Connect
- A vehicle that has either a 12 or a 24 volt battery

You will also need the data below to finish the online installation on your FleetGO platform:

- Brand and type of the vehicle
- Vehicle registration
- Current mileage
- Easy Connect (serial) number

Placing the device

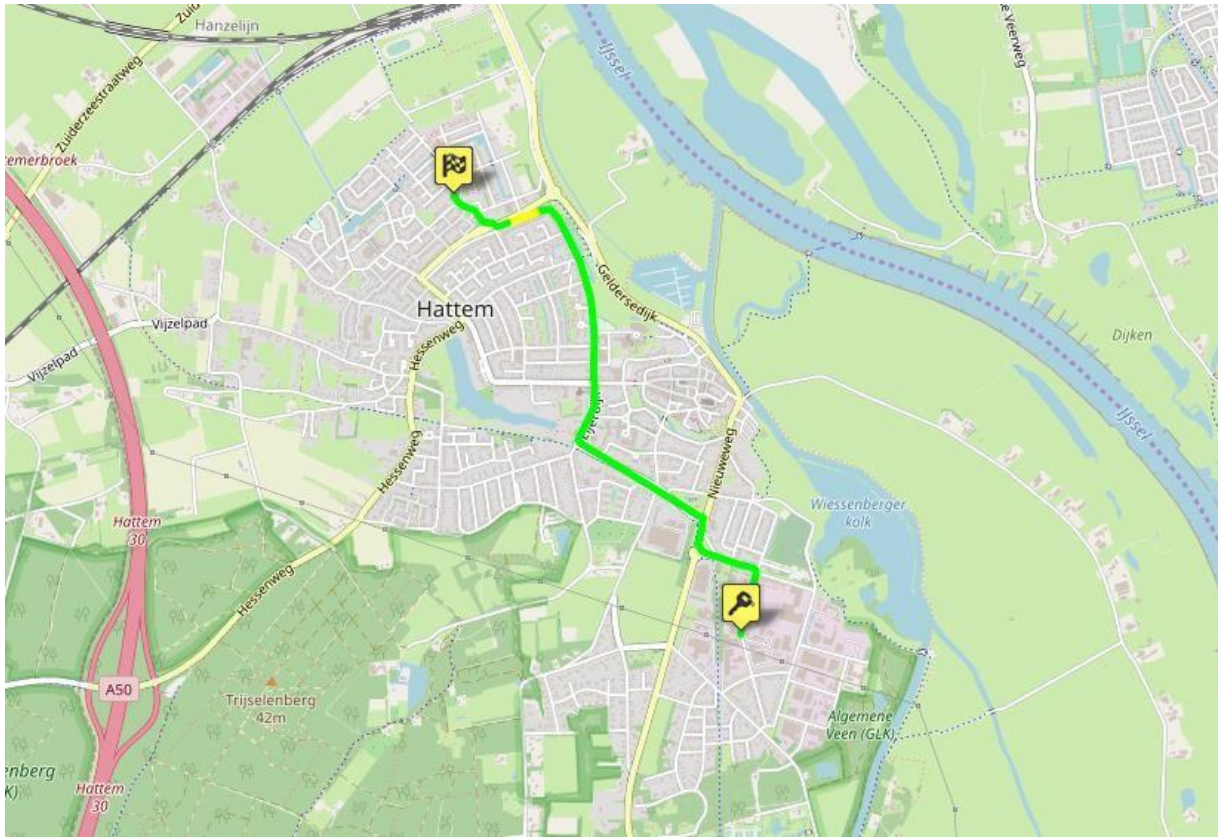
1. Localize the 12 or 24 volt battery in the vehicle.
2. Connect the positive wire (in red) to the battery + (also red), and connect the negative wire (black) to the battery – (also black). You could choose to connect the unit to an alternative source, this could be anything from steel, if connected to the vehicles VIN.
3. When the light 'status and 'navigate' blink, the device is ready to use.

Connect Easy Connect to platform

1. Log in to your FleetGO account
2. Go to **Management**, go to **Common** and then go to **Dongles/Trackers**
3. Click on the icon (≡) on the right of the Easy Connect you're installing (check the serial number) and choose the option **Assign dongle/tracker**
4. Fill in the vehicle registration and the current mileage, close with Save.
5. Navigate to left and click Administration, click on the icon (≡) behind the concerned administration. Click Edit and fill in the Vehicle Brand and Type.

Device testing

1. Start the vehicle for a short test drive of at least 2minutes. Make sure you really drive some distance!
2. Stop the vehicle, ignition off, and login to the FleetGO platform again.
3. Click on **Production** in the menu and go to **Trips**. Select the vehicle from the **Administration** menu.
4. Check if you can find records of the test drive.
Please find an example below



Do you have any further questions or are you having trouble installing the device? We are more than happy to help you! You can reach us on working days from 08:00 to 16:30 via +44(0)3333 000 321 (option 2, support) or send an email to support@fleetgo.com